

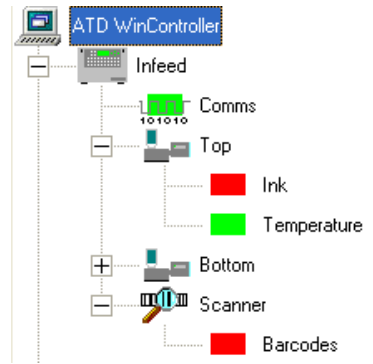
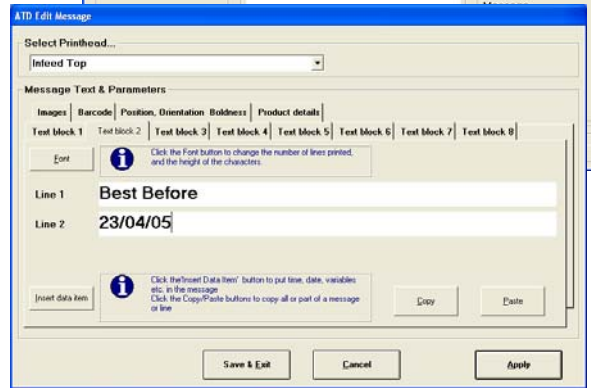
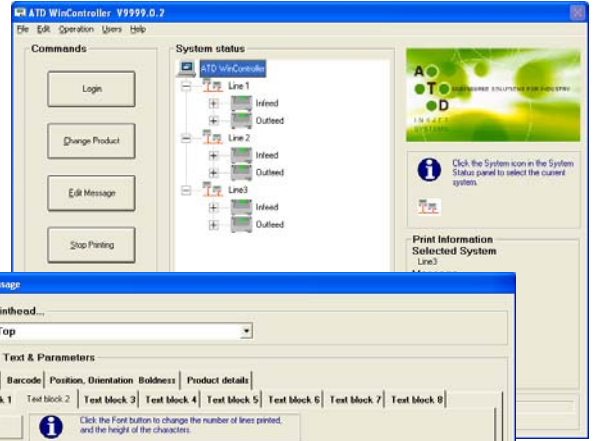


WinController Datasheet

WinController is a Windows-based software package that allows multiple IP9000 ink-jet printers to be controlled from a single PC. It also provides an intuitive, easy to use interface for creating and editing messages.

WinController extends the capabilities of the IP9000 printer:

- Almost unlimited message storage (subject to size of hard disk)
- Multiple image (bitmap) storage and management
- Automatic loading of messages to multiple printers and print-heads
- Centralised product coding database
- Backup and restore of product database
- Multiple, password protected, Operator levels
- Long messages and large images
- Product selection by keyboard, mouse, barcode wand or on-line barcode scanner (automatic selection*)
- Interface to barcode verifiers or downstream scanners, to give real time warning of bad coding, reducing wastage and supply chain problems.
- External Alarm Beacon output and graphical fault and warning display



- Production statistics and reporting*

Product based operation

WinController allows you to build a central database of the coding requirements for all your products. When an Operator selects a product the information is loaded to all the printers on the chosen production line.



Simplicity



The Operator simply selects the required product by description (and product descriptions can easily be ordered into multiple levels). Alternatively the Operator can select the product by scanning a bar code from a works order, product data sheet, or the product packaging itself.

Security

Multiple level password protection ensures the product database is safe from accidental or unplanned modification, and control of your coding process can be assured.

WinController will monitor the output from on-line bar code verifiers/scanners to ensure barcode legibility is maintained. WinController will set an Alarm if bad code levels exceed the configured tolerance.



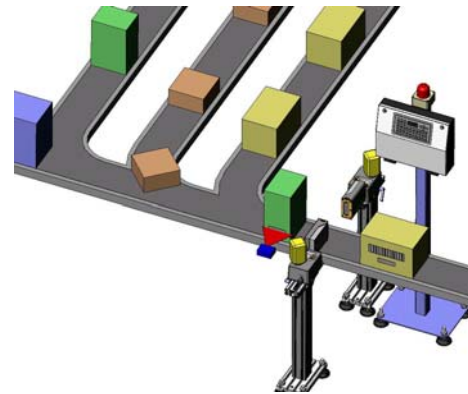
Flexibility



WinController will automatically prompt Operators for information such as Lot Codes or Works Order Numbers that are required when changing to a new product. In addition WinController will maintain Best Before dates, Shift codes and Production Line Identification codes.

Automation

WinController can be configured to act as master print controller for multiple production lines feeding into a single packing or coding station. Data identifying the next product can come from an upstream barcode scanner, or via serial data from, for example, a PLC. WinController will automatically configure the print-heads for each product as it arrives.



Specifications

Minimum PC Requirements:
OS: Windows 98, XP Home, XP Professional, Win2000, Win2003, WinNT V3.5 or NT4.0
Screen 1024x780 16-bit colour
Hard disk: 10MB free space
128MB RAM
CPU: 900MHz
1 RS232 or RS422 Serial port per attached IP9000 Controller

ATD can supply a range of suitable I/O cards and interface adapters, or fully configured PC's Ethernet to RS232 network compliant*

Minimum configuration: 1 IP9000 Controller with 1 print-head

Maximum configuration: up to 64 attached serial devices. Maximum 32 IP9000 controllers (64 print-heads)

Operates with all the ATD IP900 range of print-heads

For full details of all ATD range of Ink-jet Printing Systems and Engineered Solutions visit www.atduk.com, or mail mail@atduk.com

“**” denotes optional feature

Specifications subject to change without notice